



# InnovaSUMP

Interreg Europe



European Union  
European Regional  
Development Fund

## State of the art in SUMP's

**Panagiotis Papaioannou & Ioannis Politis**

Department of Civil Engineering, Aristotle University of  
Thessaloniki, Greece

[papa@civil.auth.gr](mailto:papa@civil.auth.gr), [pol@civil.auth.gr](mailto:pol@civil.auth.gr)



ARISTOTLE  
UNIVERSITY OF  
THESSALONIKI

19 April, 2017 | InnovaSUMP kick off meeting in Rome

# Presentation Layout

- 1. What is SUMP**
- 2. Definition of SUMP**
- 3. EU policy towards SUMP**
- 4. Transport Planning and SUMP**
- 5. SUMP guidelines**
- 6. SUMP objectives and characteristics**
- 7. SUMP cycle**
- 8. SUMP Challenges**
- 9. SUMP best cases**



# What is a Sustainable Urban Mobility Plan?

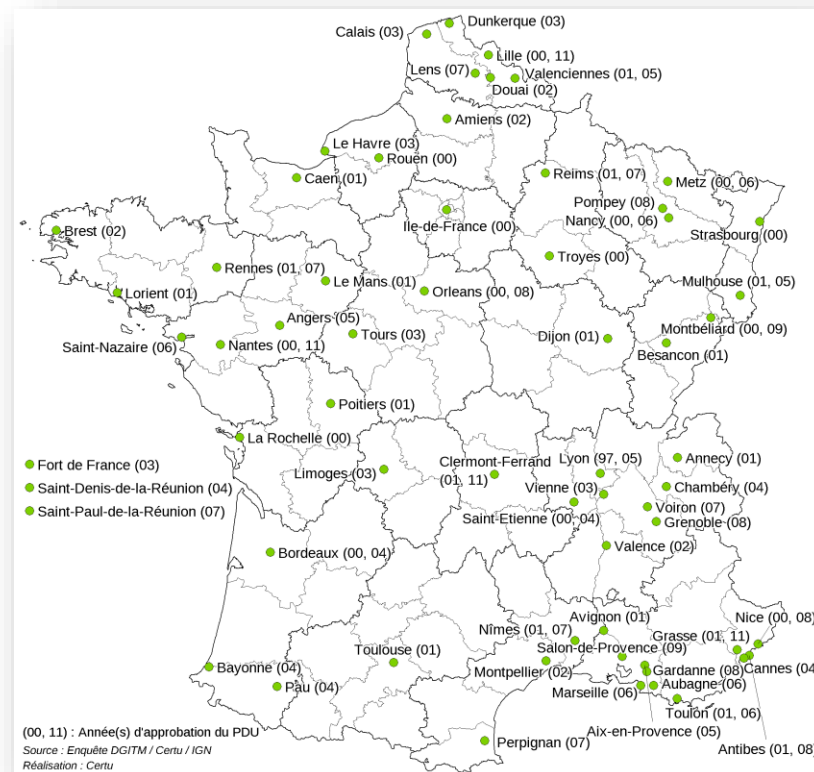
- **Strategic plan** designed to satisfy the mobility needs of people and businesses in cities and their surroundings for a **better quality of life**.
- It builds on **existing planning practices** and takes due consideration of **integration, participation, and evaluation principles**.

# SUMP in Europe

□ **SUMP**: Evolution of Traditional Transport Planning Plans

□ **Innovator countries in Europe:**

- United Kingdom: Local Transport Plans (**LTP**)
- France: Plan de Déplacements Urbains (**PDU**)



# EU Policy Towards SUMP

- ✓ **Action Plan of Urban Mobility (2009):** EU proposed to accelerate the take-up of Sustainable Urban Mobility Plans in Europe
- ✓ **Council of the European Union (2010):** stated its support for the development of Sustainable Urban Mobility Plans for cities and metropolitan areas
- ✓ **Transport White Paper (2011):** cities with a specific number of inhabitants should be encouraged to develop Sustainable Urban Mobility Plans

# White paper of 2011 also..

- ✓ Suggests the feasibility for **mandatory** development of SUMPs for mid-size and larger cities
- ✓ Linkage of **Structural & Investment EU funds** with the development of SUMPs
- ✓ **Urban Mobility Package (2013):** clearly states the link between EU funds and cities' maturity to develop and implement mobility management measures



# SUMPs related documents



## Guidelines - Developing and Implementing a Sustainable Urban Mobility Plan



## The State-of-the-Art Report of Sustainable Urban Mobility Plans in Europe



## Roadmap to a Single European Transport Area – Towards a competitive and resource efficient transport system

# SUMPs related documents



## Directorate-General For Internal Policies. Policy Department, Sustainable Urban Transport Plans



## Urban Mobility Plans Throughout Europe



## Action Plan on Urban Mobility 2009 - Communication



# SUMPs related documents



**Sustainable Urban Transport Plans. Preparatory Document in relation to the follow-up of the Thematic Strategy on the Urban Environment**



**Sustainable Urban Transport Planning - Guidance for stakeholders**



**Communication from the European Commission to the EU Member States on the Thematic Strategy on Urban Environment**

# TTP vs SUMPs (1/2)

<b>Traditional Transport Planning (TTP)</b>	<b>Sustainable Urban Mobility Plans (SUMP)</b>
<b>Focus on Traffic</b>	<b>Focus on people</b>
<b>Primary objectives: Traffic flow capacity and speed</b>	<b>Primary objectives: Accessibility and quality of life, sustainability (3es)</b>
<b>Modal-focussed</b>	<b>Balanced development of all relevant transport modes and shift towards cleaner and more sustainable transport modes</b>
<b>Short- and medium-term delivery plan</b>	<b>Short- and medium-term delivery plan embedded in a long-term vision and strategy</b>
<b>Related to an administrative area</b>	<b>Related to a functioning area based on travel-to work patterns</b>
<b>Domain of traffic engineers</b>	<b>Interdisciplinary planning teams</b>

# TTP vs SUMPs (2/2)

<b>Traditional Transport Planning (TTP)</b>	<b>Sustainable Urban Mobility Plans (SUMP)</b>
<b>Infrastructure focus</b>	<b>Integrated set of actions to achieve cost-effective solutions</b>
<b>Limited impact assessment</b>	<b>Regular monitoring and evaluation of impacts to inform a structured learning and improvement process</b>
<b>Planning by experts</b>	<b>Planning with the involvement of stakeholders using a transparent and participatory approach</b>

# SUMP Guidelines

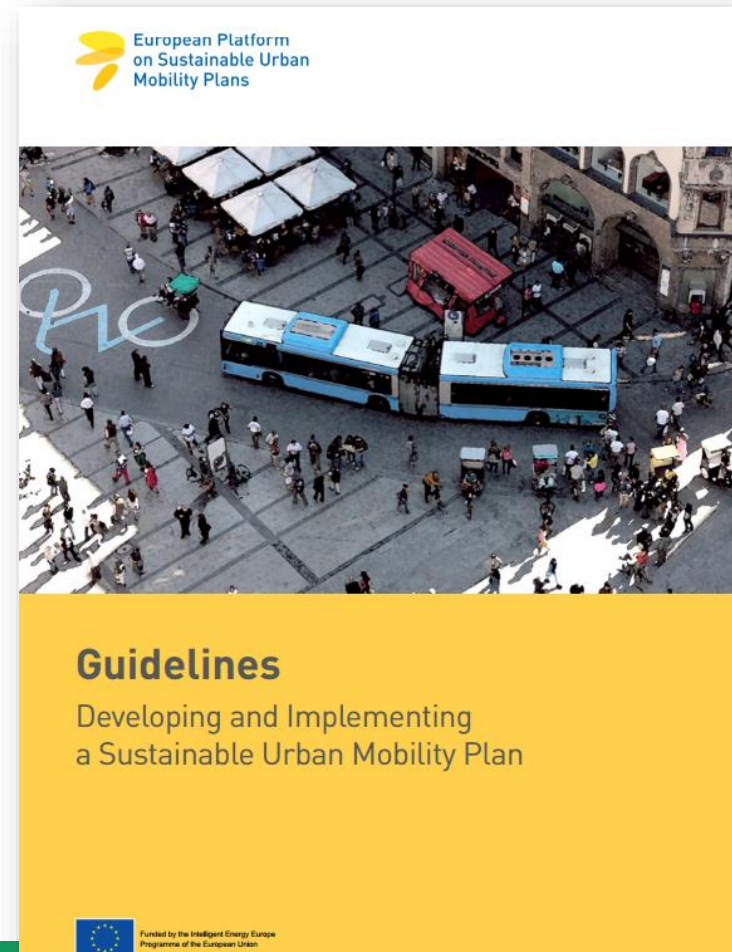
❑ Developed within the framework of ELTIS plus project

❑ Final version published in January 2014

❑ Available on 9 Languages

- EN
- BG
- ES
- GR
- HU
- IT
- PL
- RO
- UA

❑ [www.mobilityplans.eu](http://www.mobilityplans.eu)



# SUMP Main Characteristics

**Building on existing practices and regulatory frameworks, the basic characteristics of a SUMP are:**

- Long-term vision and clear implementation plan;
- Participatory approach;
- Balanced and integrated development of all transport modes;
- Horizontal and vertical integration;
- Assessment of current and future performance;
- Regular monitoring, review and reporting;
- Consideration of external costs for all transport modes.

# SUMP Main Benefits

## 10 main arguments for the added value of SUMP

1. Improving quality of life
2. Saving costs – creating economic benefits
3. Contributing to a better health and environment
4. Making mobility seamless and improving access
5. Making more effective use of limited resources
6. Winning public transport
7. Preparing better plans
8. Fulfilling legal obligations effectively
9. Using synergies, increasing relevance
10. Moving towards a new mobility culture

# THE PROCESS OF DEVELOPING A SUMP

# Developing a SUMP

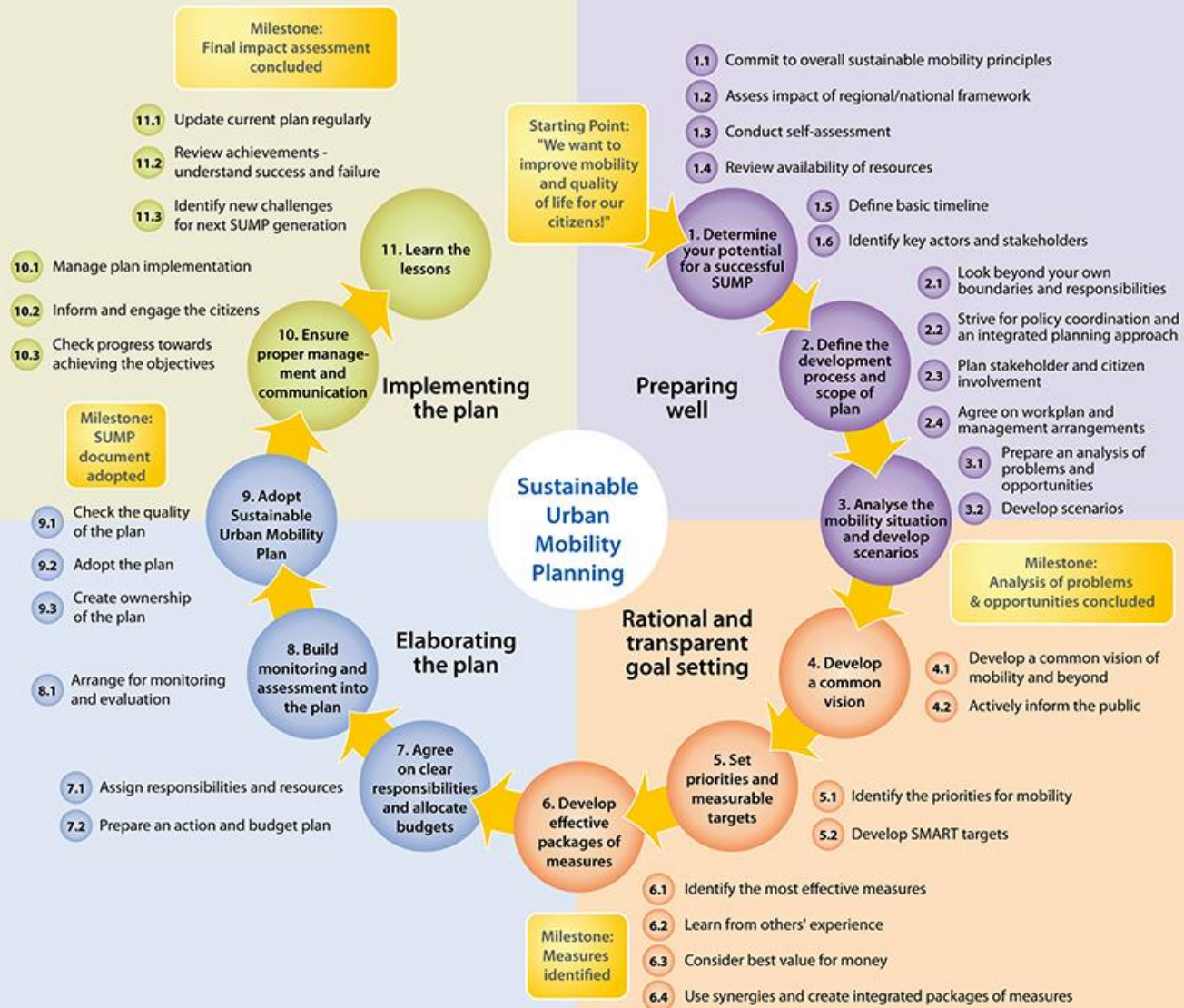
Based on the SUMP Guidelines, the process of developing a SUMP is divided in

- 4 Phases
- 11 Steps
- 32 Tasks

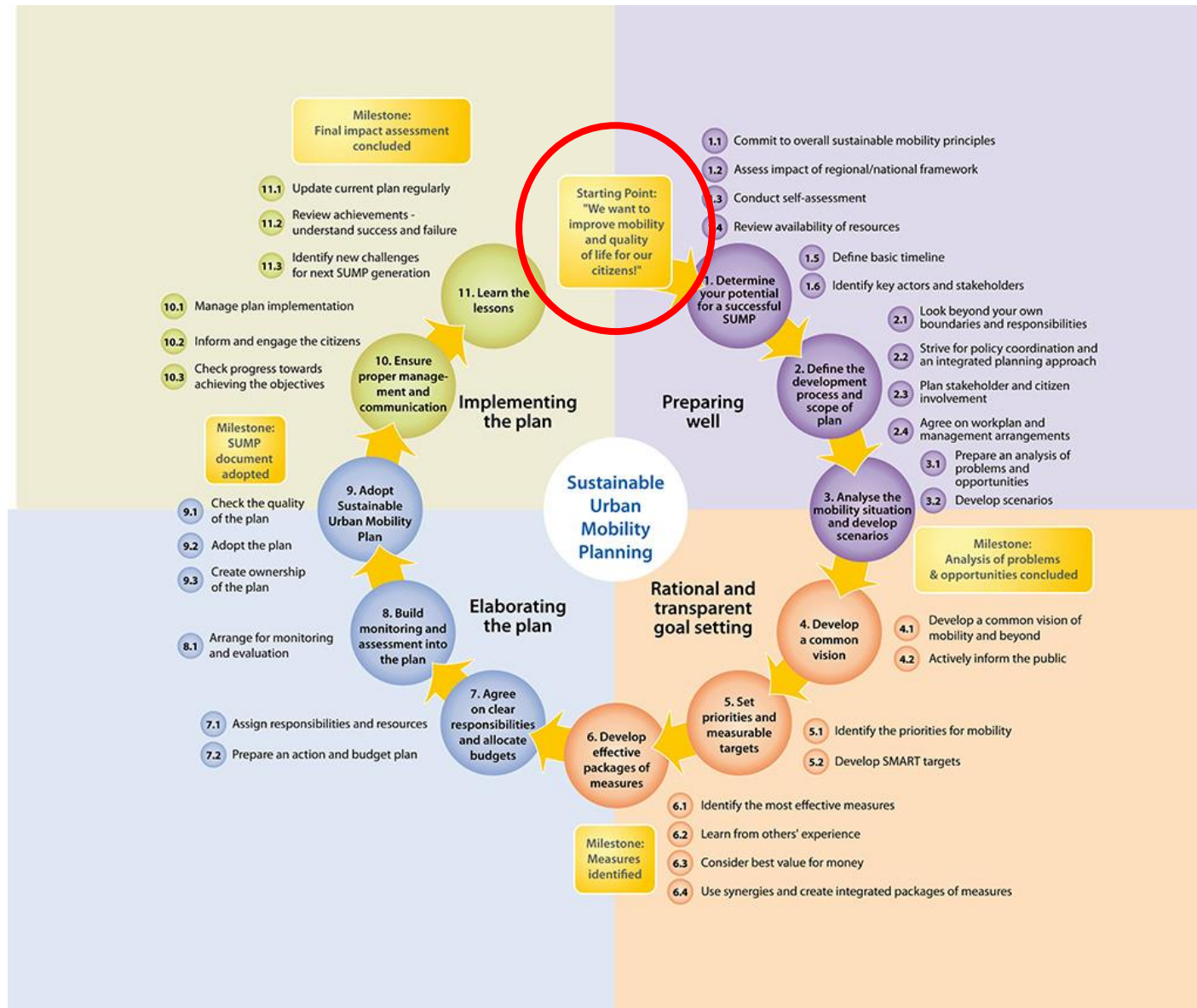


All these procedures are illustrated in the “SUMP cycle”





# The main vision



# Developing a SUMP

## The 4 phases of a SUMP

- **Phase 1:** Preparing well
- **Phase 2:** Rational and Transparent Goal Setting
- **Phase 3:** Elaborating the plan
- **Phase 4:** Implementing the plan

# Phase 1: Preparing well

Starting Point:  
"We want to improve mobility and quality of life for our citizens!"

- 1.1 Commit to overall sustainable mobility principles
- 1.2 Assess impact of regional/national framework
- 1.3 Conduct self-assessment
- 1.4 Review availability of resources

1. Determine your potential for a successful SUMP

1.5 Define basic timeline

1.6 Identify key actors and stakeholders

Preparing well

2. Define the development process and scope of plan

2.1 Look beyond your own boundaries and responsibilities

2.2 Strive for policy coordination and an integrated planning approach

2.3 Plan stakeholder and citizen involvement

2.4 Agree on workplan and management arrangements

Sustainable Urban Mobility Planning

3. Analyse the mobility situation and develop scenarios

3.1 Prepare an analysis of problems and opportunities

3.2 Develop scenarios

Milestone:  
Analysis of problems

# Milestone - I

**Milestone:  
Analysis of problems  
& opportunities concluded**

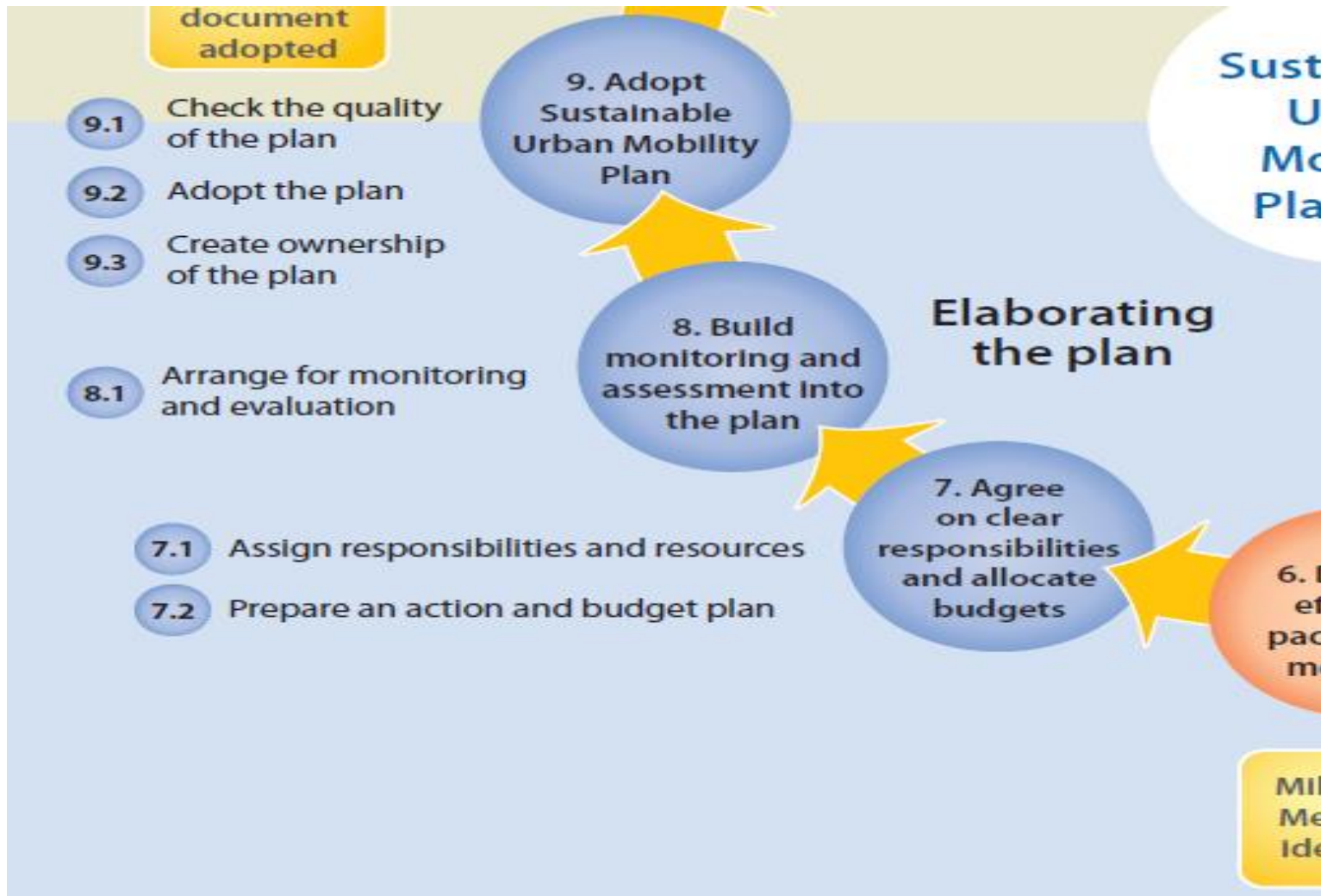
# Phase 2: Rational and Transparent Goal Setting



# Milestone - II

**Milestone:  
Measures  
identified**

# Phase 3: Elaborating the Plan

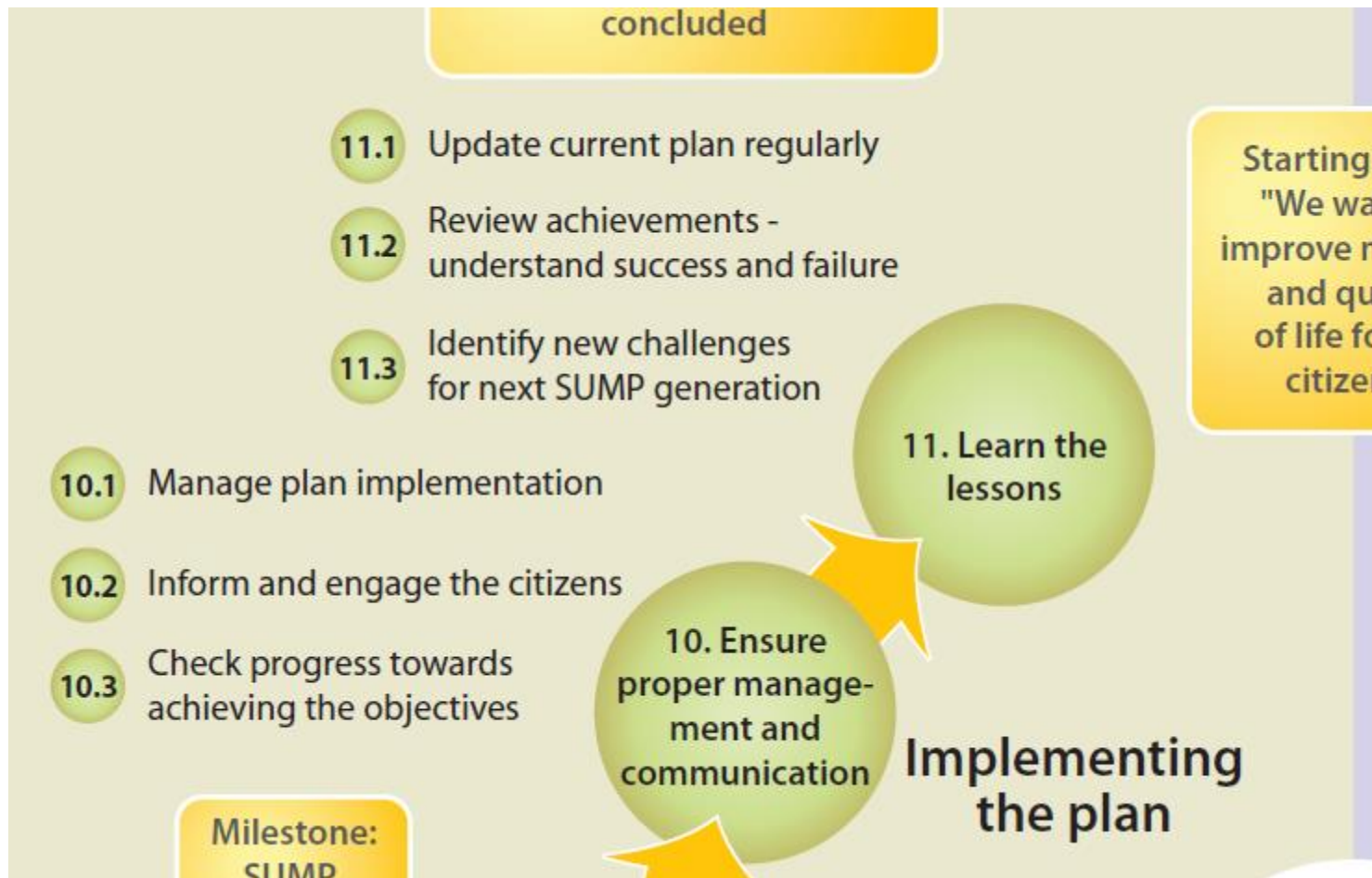




# Milestone - III

**Milestone:  
SUMP  
document  
adopted**

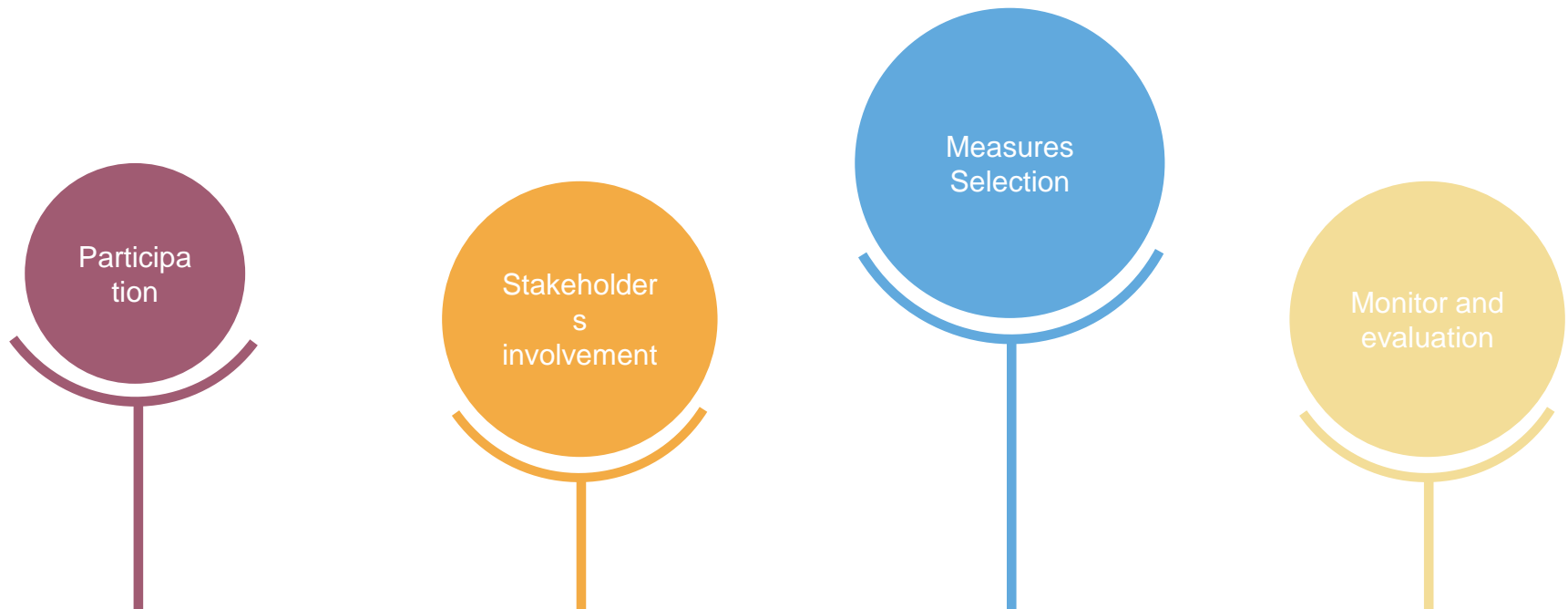
# Phase 4: Implementing the Plan



# Milestone - IV

**Milestone:  
Final impact assessment  
concluded**

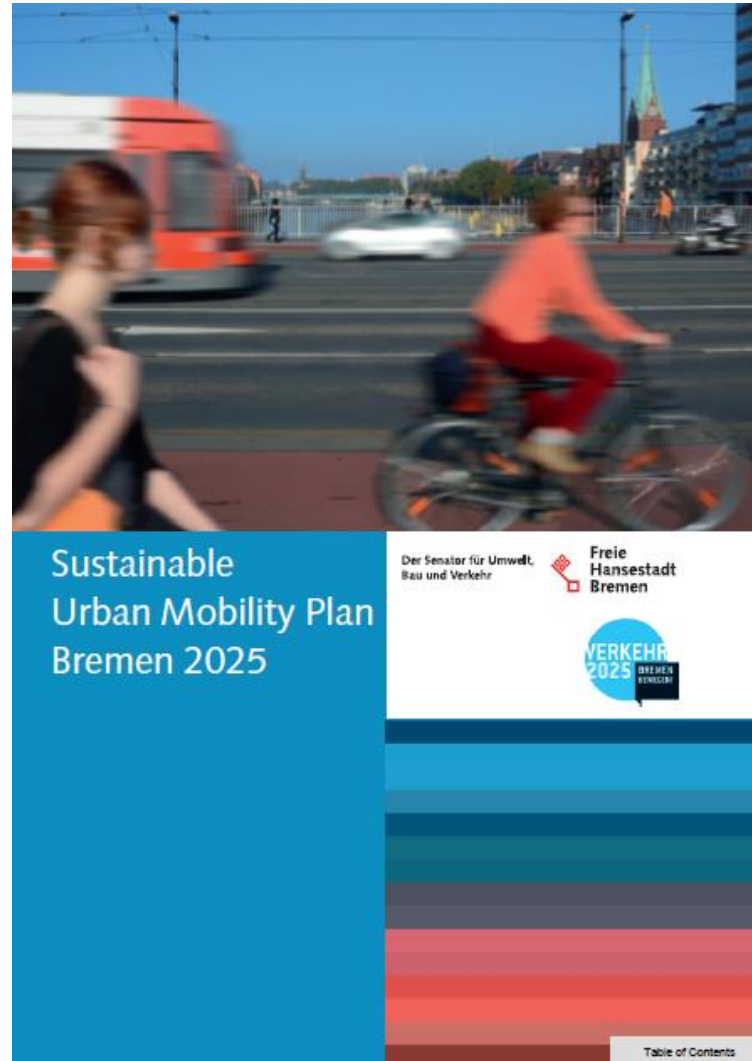
# The 4 Challenges of SUMP



Identification of the most appropriate package of measures for the fulfilling of cities' policy targets  
Engagement of local authorities, public citizens and other stakeholders in the planning procedures and decision making

# SUMP Good Cases

## Bremen SUMP



# SUMP Good Cases

## Denmark SUMP

(Copenhagen, Odense, Aalborg, Esbjerg, and Roskilde)



# SUMP Good Cases

## Thessaloniki SUMP



Λεωφ. Γεωργικής Σχολής  
65, 570 01,  
Πύλας - Θεσσαλονίκη  
Τ. 230 483070,  
F. 230 483071

[www.attaproject.eu](http://www.attaproject.eu) [www.thiia.gov.gr](http://www.thiia.gov.gr)

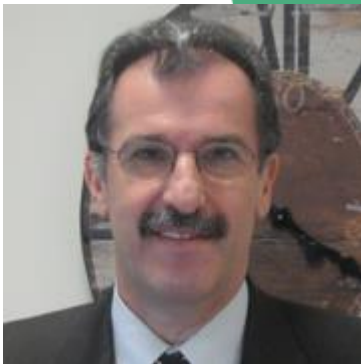
# InnovaSUMP

Interreg Europe



European Union  
European Regional  
Development Fund

## Thank you!



**Panagiotis Papaioannou**  
([papa@civil.auth.gr](mailto:papa@civil.auth.gr))

Questions welcome



**Ioannis Politis**  
([pol@civil.auth.gr](mailto:pol@civil.auth.gr))



ARISTOTLE  
UNIVERSITY OF  
THESSALONIKI



*Projects media*